

## CHICAGO MARRIOTT MAGNIFICENT MILE

PLEASE NOTE THAT DIRECTIONS GIVEN IN 'STEPS' ARE APPROXIMATE

### PUBLIC AREAS, ELEVATORS, AND RESTROOMS

#### **RUSH STREET ENTRANCE << TO >> FRONT DESK**

THE RUSH STREET REVOLVING DOORS ARE WHEELCHAIR ACCESSIBLE AND EQUIPPED WITH A BUTTON THAT SLOWS THE REVOLVING DOOR SPEED. THE SPEED ACTIVATION BUTTON IS LOCATED AT THE RIGHT SIDE OF THE REVOLVING DOOR AT 36" AFF. ADDITIONAL ENTRY DOORS ARE LOCATED TO THE LEFT (NORTH) AND RIGHT (SOUTH) OF THE REVOLVING DOORS. THE ADDITIONAL ENTRY DOORS ARE NOT EQUIPPED WITH AUTOMATIC OPENING DEVICES

- UPON EXITING FROM THE RUSH STREET NORTH REVOLVING DOOR PROCEED FORWARD 4 STEPS
- ↪ TURN RIGHT AND PROCEED 22 STEPS
- ↩ TURN LEFT AND PROCEED 19 STEPS
- ↪ TURN RIGHT AND PROCEED 6 STEPS, WHICH WILL PLACE YOU DIRECTLY CENTER OF THE FRONT DESK PODS
- ◆ THERE ARE FOUR PODS WITH EIGHT CHECK-IN STATIONS AT THE FRONT DESK. LOBBY AMBASSADORS ARE ON DUTY AND AVAILABLE TO ASSIST GUESTS WITH QUESTIONS AND DIRECTIONS

#### **RUSH STREET ENTRANCE << TO >> MEETING ROOM ELEVATORS**

THE RUSH STREET REVOLVING DOORS ARE WHEELCHAIR ACCESSIBLE AND EQUIPPED WITH A BUTTON THAT SLOWS THE REVOLVING DOOR SPEED. THE SPEED ACTIVATION BUTTON IS LOCATED AT THE RIGHT SIDE OF THE REVOLVING DOOR AT 36" AFF. ADDITIONAL ENTRY DOORS ARE LOCATED TO THE LEFT (NORTH) AND RIGHT (SOUTH) OF THE REVOLVING DOORS. THE ADDITIONAL ENTRY DOORS ARE NOT EQUIPPED WITH AUTOMATIC OPENING DEVICES

- UPON EXITING FROM THE RUSH STREET NORTH REVOLVING DOOR PROCEED FORWARD 4 STEPS
- ↩ TURN LEFT AND PROCEED 14 STEPS, WHICH WILL PLACE YOU DIRECTLY CENTER OF THE MEETING ROOM ELEVATORS
- ◆ THERE ARE TWO ELEVATORS AND THE ELEVATOR CALL BUTTON IS LOCATED BETWEEN THE TWO ELEVATOR CABS

## **CHICAGO MARRIOTT MAGNIFICENT MILE**

PLEASE NOTE THAT DIRECTIONS GIVEN IN 'STEPS' ARE APPROXIMATE

### **PUBLIC AREAS, ELEVATORS, AND RESTROOMS CONT...**

#### **MICHIGAN AVENUE ENTRANCE << TO >> FRONT DESK**

THE MICHIGAN AVENUE ENTRANCE HAS A SINGLE ENTRY DOOR LOCATED ON THE RIGHT SIDE (NORTH) OF THE REVOLVING DOOR. THE DOOR IS EQUIPPED WITH A BUTTON THAT OPENS THE DOOR AND THE DOOR ACTIVATION BUTTON IS LOCATED AT THE RIGHT SIDE OF THE DOOR AT 44" AFF

- UPON EXITING THE MICHIGAN AVENUE ACCESSIBLE DOOR PROCEED FORWARD 2 STEPS
- ↩ TURN LEFT AND PROCEED 2 STEPS, WHICH WILL PLACE YOU AT THE FIRST AUTOMATIC SLIDING DOOR
- ↪ TURN RIGHT AND PROCEED THROUGH THE FIRST AUTOMATIC SLIDING DOOR AND CONTINUE 13 STEPS TO THE SECOND AUTOMATIC SLIDING DOOR
- CONTINUE 13 STEPS TO THE LOBBY STAIR LANDING
- ◆ IN LIEU OF AN ACCESSIBLE RAMP THERE IS AN ACCESSIBLE ELEVATOR LIFT LOCATED TO THE RIGHT (NORTH) OF THE LOBBY LEVEL STAIRS. ACCESSIBLE LIFT ACCESS IS VIA A CALL BUTTON LOCATED TO THE LEFT OF THE LIFT AT 36" AFF
- DESCEND 4 STAIR TREADS TO THE SECOND LANDING OF THE LOBBY STAIRS
- PROCEED 1 STEP TO THE SECOND GROUP OF STAIRS
- DESCEND 5 STAIR TREADS TO THE LOBBY LEVEL
- PROCEED 2 STEPS FORWARD
- ↩ TURN LEFT AND PROCEED 20 STEPS
- ↪ TURN RIGHT AND PROCEED 6 STEPS
- ↩ TURN LEFT AND PROCEED 6 STEPS, WHICH WILL PLACE YOU DIRECTLY CENTER OF THE FRONT DESK PODS
- ◆ THERE ARE FOUR PODS WITH EIGHT CHECK-IN STATIONS AT THE FRONT DESK. LOBBY AMBASSADORS ARE ON DUTY AND AVAILABLE TO ASSIST GUESTS WITH QUESTIONS AND DIRECTIONS

#### **FRONT DESK << TO >> THE CONCIERGE DESK**

- WITH THE FRONT DESK BEHIND YOU PROCEED 6 STEPS TO THE MAIN WALKWAY
- ↩ TURN TO THE LEFT AND PROCEED 8 STEPS
- ↩ TURN LEFT AND PROCEED 6 STEPS TO REACH THE CONCIERGE DESK. THE DESK IS LOCATED BETWEEN TWO COLUMNS THAT WILL BE ON YOUR LEFT AND RIGHT SIDE WHEN PROCEEDING

## CHICAGO MARRIOTT MAGNIFICENT MILE

PLEASE NOTE THAT DIRECTIONS GIVEN IN 'STEPS' ARE APPROXIMATE

### PUBLIC AREAS, ELEVATORS, AND RESTROOMS CONT...

#### **FRONT DESK << TO >> HIGH-RISE ELEVATORS (FLOORS 1 - 9 & 28 - 46)**

- WITH THE FRONT DESK BEHIND YOU PROCEED 6 STEPS TO THE MAIN WALKWAY
- ↩ TURN LEFT AND PROCEED 12 STEPS
- ↩ TURN LEFT AND PROCEED 7 STEPS
- ↪ TURN RIGHT AND PROCEED 7 STEPS TO REACH THE APPROXIMATE CENTER OF THE HIGH-RISE ELEVATOR LOBBY
- ↪ THE ELEVATOR CALL BUTTON WILL BE 1 STEP TO THE RIGHT SIDE (NORTH)
- ◆ THERE ARE SIX ELEVATORS IN THE HIGH-RISE ELEVATOR BANK, THREE ON THE RIGHT AND THREE ON THE LEFT. THE ELEVATOR CALL BUTTON IS ON THE RIGHT SIDE (NORTH) OF THE ELEVATOR LOBBY

#### **FRONT DESK << TO >> LOW-RISE ELEVATORS (FLOORS 1 - 28)**

- WITH THE FRONT DESK BEHIND YOU PROCEED 6 STEPS TO THE MAIN WALKWAY
- ↩ TURN LEFT AND PROCEED 12 STEPS
- ↩ TURN LEFT AND PROCEED 16 STEPS
- ↪ TURN RIGHT AND PROCEED 7 STEPS TO REACH THE APPROXIMATE CENTER OF THE LOW-RISE ELEVATOR LOBBY
- ↪ THE ELEVATOR CALL BUTTONS WILL BE 1 STEP TO THE RIGHT
- ◆ THERE ARE SIX ELEVATORS IN THE LOW-RISE ELEVATOR BANK, THREE ON THE RIGHT AND THREE ON THE LEFT. THE ELEVATOR CALL BUTTON IS ON THE RIGHT SIDE (NORTH) OF THE ELEVATOR LOBBY

#### **FRONT DESK << TO >> MEETING ROOM ELEVATOR (FLOORS 1 - 7)**

- WITH THE FRONT DESK BEHIND YOU PROCEED 6 STEPS TO THE MAIN WALKWAY
- ↩ TURN LEFT AND PROCEED 19 STEPS
- ↪ TURN RIGHT AND PROCEED 36 STEPS, WHICH WILL PLACE YOU DIRECTLY CENTER OF THE MEETING ROOM ELEVATORS
- ◆ THERE ARE TWO ELEVATORS AND THE ELEVATOR CALL BUTTON IS LOCATED BETWEEN THE TWO ELEVATOR CABS

#### **FRONT DESK << TO >> BELL DESK**

- WITH THE FRONT DESK BEHIND YOU PROCEED 6 STEPS TO THE MAIN WALKWAY
- ↩ TURN LEFT AND PROCEED 19 STEPS
- ↪ TURN RIGHT AND PROCEED 17 STEP
- ↩ TURN LEFT AND PROCEED 1 STEP TO REACH THE BELL DESK

## CHICAGO MARRIOTT MAGNIFICENT MILE

PLEASE NOTE THAT DIRECTIONS GIVEN IN 'STEPS' ARE APPROXIMATE

### PUBLIC AREAS, ELEVATORS, AND RESTROOMS CONT...

#### FRONT DESK << TO >> THE SECOND FLOOR RESTROOMS

- WITH THE FRONT DESK BEHIND YOU PROCEED 6 STEPS TO THE MAIN WALKWAY
- ↩ TURN LEFT AND PROCEED 12 STEPS
- ↩ TURN LEFT AND PROCEED 7 STEPS
- ↪ TURN RIGHT AND PROCEED 7 STEPS TO REACH THE APPROXIMATE CENTER OF THE HIGH-RISE ELEVATOR LOBBY
- ↪ THE ELEVATOR CALL BUTTON WILL BE 1 STEP TO THE RIGHT SIDE (NORTH)
- ◇ ACCESS THE HIGH-RISE ELEVATOR AND SELECT THE SECOND FLOOR
- EXIT THE ELEVATOR ON THE SECOND FLOOR AND PROCEED EAST 7 STEPS
- ↩ TURN LEFT AND PROCEED 7 STEPS
- ↩ TURN LEFT AND PROCEED 4 STEPS
- ↪ TURN RIGHT AND PROCEED 25 STEPS, WHICH WILL PLACE YOU AT THE APPROXIMATE CENTER OF THE MEN'S AND WOMEN'S RESTROOM ENTRANCE DOORS LOCATED ON YOUR LEFT SIDE. MEN'S IS FIRST AND WOMEN'S IS SECOND
- ↩ TURN LEFT AND PROCEED 2 STEPS FORWARD TO ENTER RESTROOM

#### FRONT DESK << TO >> THE FEDEX BUSINESS CENTER

- WITH THE FRONT DESK BEHIND YOU PROCEED 6 STEPS TO THE MAIN WALKWAY
- ↩ TURN LEFT AND PROCEED 12 STEPS
- ↩ TURN LEFT AND PROCEED 7 STEPS
- ↪ TURN RIGHT AND PROCEED 7 STEPS TO REACH THE APPROXIMATE CENTER OF THE HIGH-RISE ELEVATOR LOBBY
- ↪ THE ELEVATOR CALL BUTTON WILL BE 1 STEP TO THE RIGHT (NORTH SIDE)
- ◇ ACCESS THE HIGH-RISE ELEVATOR AND SELECT THE SECOND FLOOR
- EXIT THE ELEVATOR ON THE SECOND FLOOR AND PROCEED EAST 7 STEPS
- ↩ TURN LEFT AND PROCEED 7 STEPS
- ↩ TURN LEFT AND PROCEED 4 STEPS
- ↪ TURN RIGHT AND PROCEED 16 STEPS
- ↩ TURN LEFT AND PROCEED 2 STEPS, WHICH WILL PLACE YOU AT THE ENTRANCE TO THE BUSINESS CENTER

## **CHICAGO MARRIOTT MAGNIFICENT MILE**

PLEASE NOTE THAT DIRECTIONS GIVEN IN 'STEPS' ARE APPROXIMATE

### **PUBLIC AREAS, ELEVATORS, AND RESTROOMS CONT...**

#### **FRONT DESK << TO >> THE FITNESS CENTER**

THE FITNESS CENTER IS LOCATED ON THE NINTH FLOOR. EXERCISE EQUIPMENT IS LOCATED ON THE LOWER SECTION OF THE FITNESS CENTER AND IS ACCESSIBLE VIA A RAMP

- WITH THE FRONT DESK BEHIND YOU PROCEED 6 STEPS TO THE MAIN WALKWAY
- ↩ TURN LEFT AND PROCEED 12 STEPS
- ↩ TURN LEFT AND PROCEED 7 STEPS
- ↪ TURN RIGHT AND PROCEED 7 STEPS TO REACH THE APPROXIMATE CENTER OF THE HIGH-RISE ELEVATOR LOBBY
- ↪ THE ELEVATOR CALL BUTTON WILL BE 1 STEP TO THE RIGHT (NORTH SIDE)
- ◆ ACCESS THE HIGH-RISE ELEVATOR AND SELECT THE NINTH FLOOR
- EXIT THE ELEVATOR ON THE NINTH FLOOR AND PROCEED EAST 7 STEPS
- ↩ TURN LEFT AND PROCEED 4 STEPS, WHICH WILL PLACE YOU AT THE ENTRY TO THE FITNESS CENTER
- ◆ THE FITNESS CENTER ENTRY DOOR IS ACCESSIBLE WITH A VALID GUESTROOM KEY. THE DOOR IS NOT EQUIPPED WITH AN AUTOMATIC OPENING DEVICE
- PROCEED THROUGH THE FITNESS CENTER DOOR 25 STEPS, WHICH WILL PLACE YOU AT THE ENTRANCE TO THE RAMP
- ↩ TURN LEFT AND PROCEED 3 STEPS
- ↩ TURN LEFT AND PROCEED 10 STEPS, WHICH WILL PLACE YOU AT THE BOTTOM OF THE RAMP AT THE SOUTH END OF THE EXERCISE EQUIPMENT

#### **FRONT DESK << TO >> RUSH STREET PANTRY (RSP)**

- WITH THE FRONT DESK BEHIND YOU PROCEED 6 STEPS TO THE MAIN WALKWAY
- ↪ TURN RIGHT AND PROCEED 13 STEPS. THERE WILL BE A COLUMN LOCATED ON YOUR LEFT AS YOU ENTER THE RSP
- ↩ TURN LEFT AND PROCEED 2 STEPS TO THE RSP SERVICE COUNTER

#### **FRONT DESK << TO >> REVIVER LOUNGE**

- WITH THE FRONT DESK BEHIND YOU PROCEED 6 STEPS TO THE MAIN WALKWAY
- ↩ TURN LEFT AND PROCEED 19 STEPS
- ↪ TURN RIGHT AND PROCEED 17 STEPS
- ↪ TURN RIGHT AND PROCEED 7 STEPS BETWEEN THE COLUMNS
- ↩ TURN LEFT APPROXIMATELY 45 DEGREES AND PROCEED 6 STEPS. THERE IS A TABLE AND CHAIR OBSTACLE ON THE RIGHT SIDE AS YOU PROCEED TO THE SOUTHWEST CORNER OF THE BAR.

## CHICAGO MARRIOTT MAGNIFICENT MILE

PLEASE NOTE THAT DIRECTIONS GIVEN IN 'STEPS' ARE APPROXIMATE

### PUBLIC AREAS, ELEVATORS, AND RESTROOMS CONT...

#### **HIGH-RISE ELEVATOR (FLOORS 1 - 9 & 28 - 46) << TO >> RUSH STREET PANTRY**

- EXIT THE ELEVATOR ON THE LOBBY LEVEL AND PROCEED EAST 7 STEPS
- ↶ TURN LEFT AND PROCEED 7 STEPS
- ↷ TURN RIGHT AND PROCEED 25 STEPS. THERE WILL BE A COLUMN LOCATED ON YOUR LEFT AS YOU ENTER THE RSP
- ↶ TURN LEFT AND PROCEED 2 STEPS TO THE RSP SERVICE COUNTER

#### **LOW-RISE ELEVATOR (FLOORS 1 - 28) << TO >> RUSH STREET PANTRY (RSP)**

- EXIT THE ELEVATOR ON THE LOBBY LEVEL AND PROCEED EAST 7 STEPS
- ↶ TURN LEFT AND PROCEED 16 STEPS
- ↷ TURN RIGHT AND PROCEED 25 STEPS. THERE WILL BE A COLUMN LOCATED ON YOUR LEFT AS YOU ENTER THE RSP
- ↶ TURN LEFT AND PROCEED 2 STEPS TO THE RSP SERVICE COUNTER

#### **HIGH-RISE ELEVATOR (FLOORS 1 - 9 & 28 - 46) << TO >> HARVEST RESTAURANT**

- EXIT THE ELEVATOR ON THE SECOND FLOOR AND PROCEED EAST 7 STEPS
- ↶ TURN LEFT AND PROCEED 7 STEPS
- ↶ TURN LEFT AND PROCEED 4 STEPS
- ↷ TURN RIGHT AND PROCEED 34 STEPS
- ↷ TURN RIGHT AND PROCEED 11 STEPS, WHICH WILL PLACE YOU AT THE HARVEST RESTAURANT HOSTESS STAND

#### **LOW-RISE ELEVATOR (FLOORS 1 - 28) << TO >> HARVEST RESTAURANT**

- EXIT THE ELEVATOR ON THE SECOND FLOOR AND PROCEED EAST 7 STEPS
- ↶ TURN LEFT AND PROCEED 15 STEPS
- ↶ TURN LEFT AND PROCEED 4 STEPS
- ↷ TURN RIGHT AND PROCEED 34 STEPS
- ↷ TURN RIGHT AND PROCEED 11 STEPS, WHICH WILL PLACE YOU AT THE HARVEST RESTAURANT HOSTESS STAND

#### **HIGH-RISE ELEVATOR (FLOORS 1 - 9 & 28 - 46) << TO >> CONCIERGE LOUNGE**

- EXIT THE ELEVATOR ON THE SECOND FLOOR AND PROCEED EAST 7 STEPS
- ↶ TURN LEFT AND PROCEED 7 STEPS
- ↷ TURN RIGHT AND PROCEED 18 STEPS, WHICH WILL PLACE YOU AT THE ENTRANCE DOOR TO THE CONCIERGE LOUNGE ON YOUR LEFT. YOU WILL NEED YOUR ROOM KEY TO ACCESS THE LOUNGE

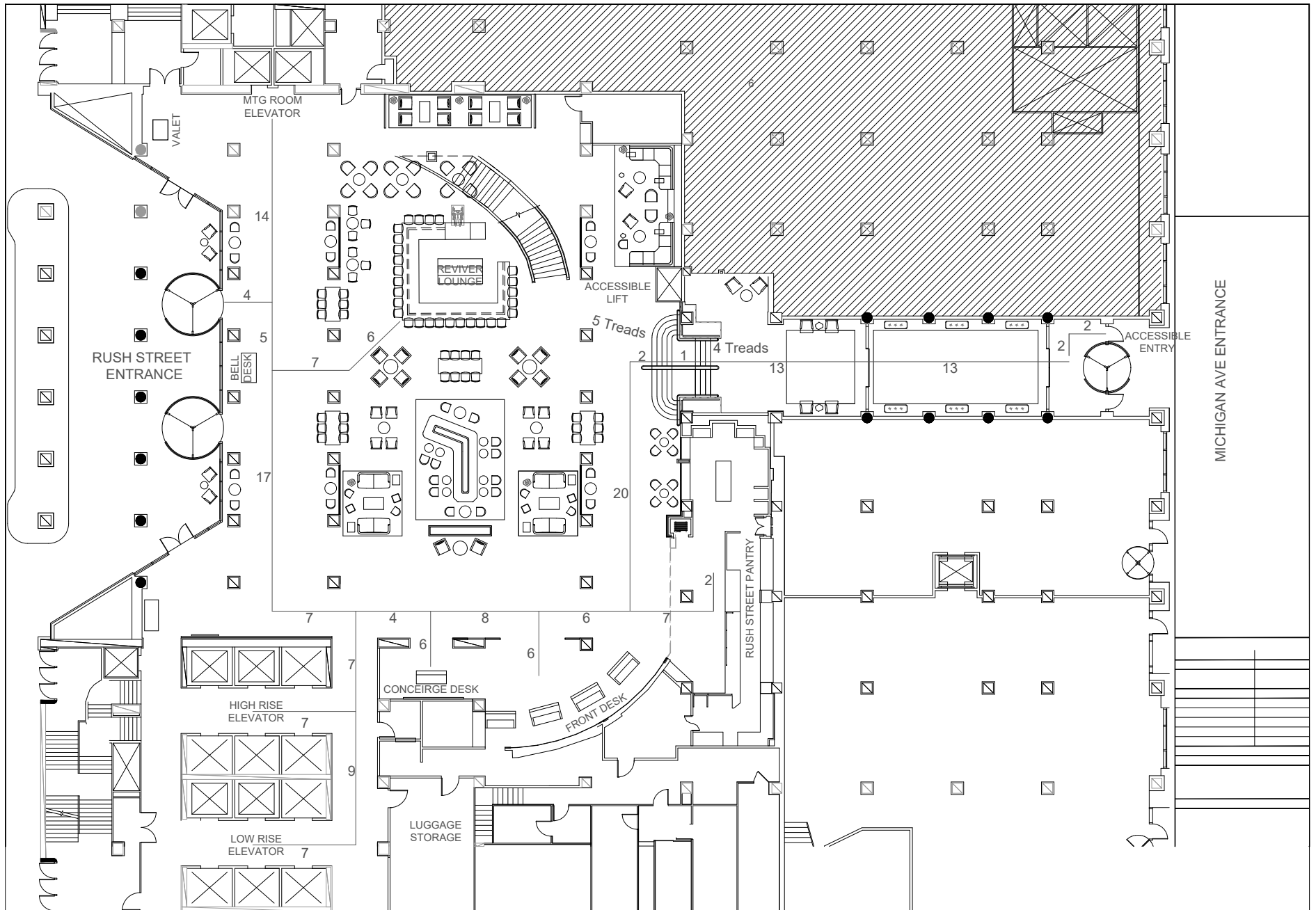
## **CHICAGO MARRIOTT MAGNIFICENT MILE**

PLEASE NOTE THAT DIRECTIONS GIVEN IN 'STEPS' ARE APPROXIMATE

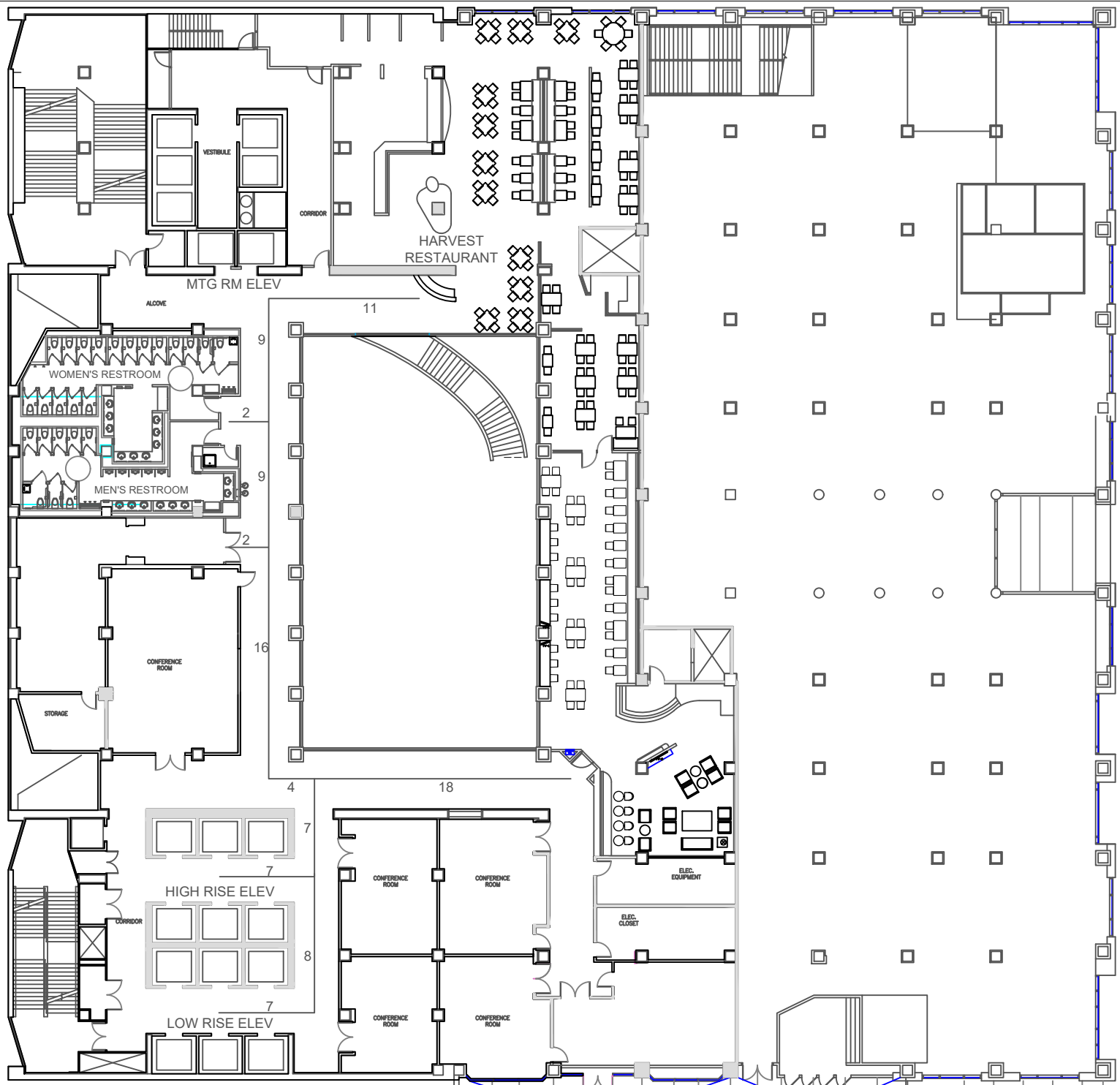
### **PUBLIC AREAS, ELEVATORS, AND RESTROOMS CONT...**

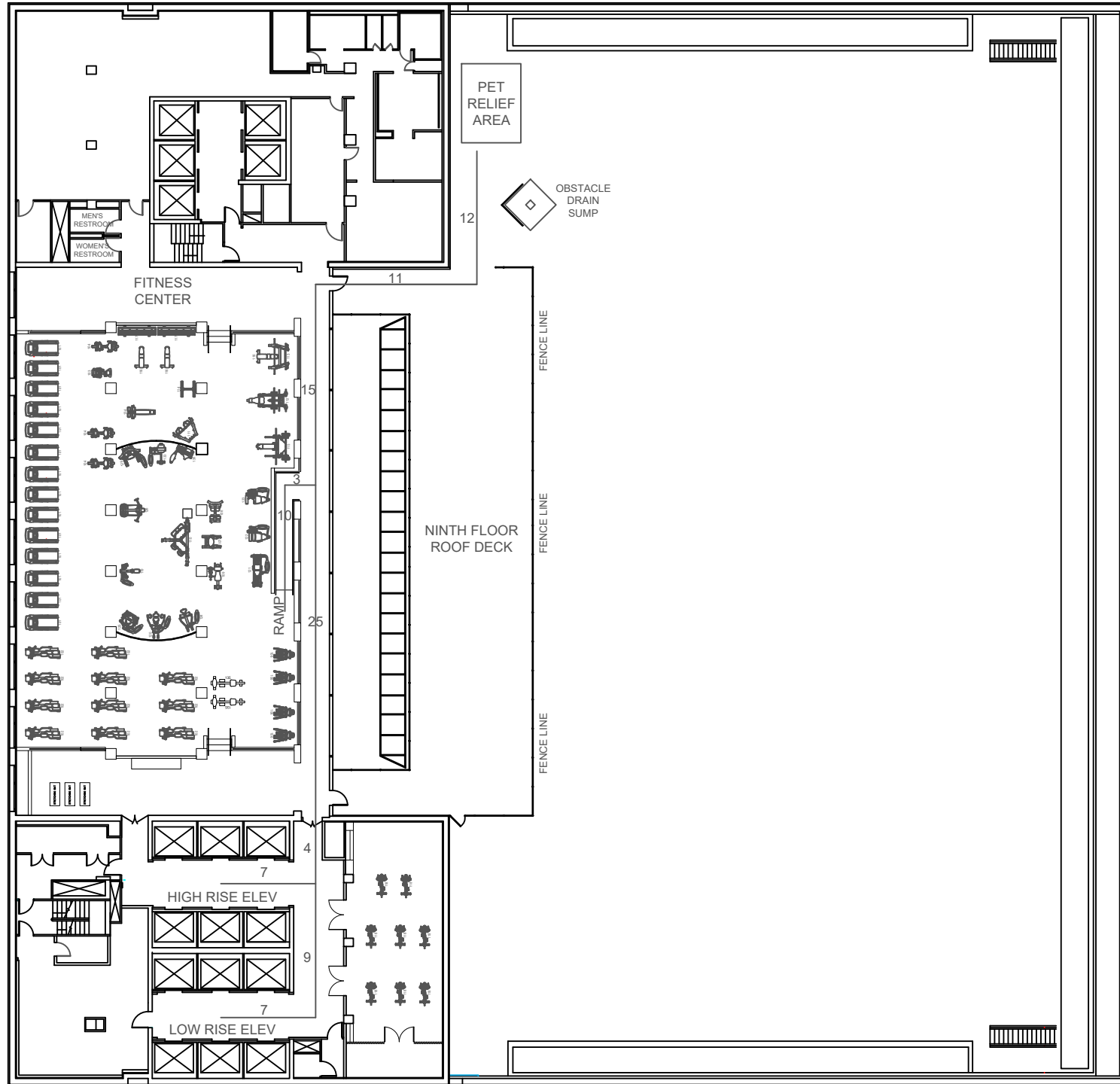
#### **LOW-RISE ELEVATOR (FLOORS 1 - 28) << TO >> CONCIERGE LOUNGE**

- EXIT THE ELEVATOR ON THE SECOND FLOOR AND PROCEED EAST 7 STEPS
- ↶ TURN LEFT AND PROCEED 15 STEPS
- ↷ TURN RIGHT AND PROCEED 18 STEPS, WHICH WILL PLACE YOU AT THE ENTRANCE DOOR TO THE CONCIERGE LOUNGE ON YOUR LEFT. YOU WILL NEED YOUR ROOM KEY TO ACCESS THE LOUNGE









## CHICAGO MARRIOTT MAGNIFICENT MILE

PLEASE NOTE THAT DIRECTIONS GIVEN IN 'STEPS' ARE APPROXIMATE

### PET RELIEF AREA (NINTH FLOOR ROOF DECK)

#### FRONT DESK << TO >> PET RELIEF AREA

THE PET RELIEF AREA IS LOCATED ON THE NINTH FLOOR ROOF DECK. ACCESS TO THE ROOF DECK IS VIA THE FITNESS CENTER.

- WITH THE FRONT DESK BEHIND YOU PROCEED 6 STEPS TO THE MAIN WALKWAY
- ↩ TURN LEFT AND PROCEED 12 STEPS
- ↩ TURN LEFT AND PROCEED 7 STEPS
- ↪ TURN RIGHT AND PROCEED 7 STEPS TO REACH THE APPROXIMATE CENTER OF THE HIGH-RISE ELEVATOR LOBBY
- ↪ THE ELEVATOR CALL BUTTON WILL BE 1 STEP TO THE RIGHT (NORTH SIDE)
- ◆ ACCESS THE HIGH-RISE ELEVATOR AND SELECT THE NINTH FLOOR
- EXIT THE ELEVATOR ON THE NINTH FLOOR AND PROCEED EAST 7 STEPS
- ↩ TURN LEFT AND PROCEED 4 STEPS, WHICH WILL PLACE YOU AT THE ENTRY TO THE FITNESS CENTER
- ◆ THE FITNESS CENTER ENTRY DOOR IS ACCESSIBLE WITH A VALID GUESTROOM KEY. THE DOOR IS NOT EQUIPPED WITH AN AUTOMATIC OPENING DEVICE
- PROCEED THROUGH THE FITNESS CENTER DOOR 40 STEPS, WHICH WILL PLACE YOU AT THE NORTH ENTRANCE TO THE ROOF DECK
- ◆ THE ROOF DECK ENTRY DOOR WILL REMAIN UNLOCKED DURING THE EVENT AND IS NOT EQUIPPED WITH AN AUTOMATIC OPENING DEVICE
- ↪ TURN RIGHT AND PROCEED THROUGH THE DOOR 11 STEPS
- ↩ TURN LEFT AND PROCEED 12 STEPS THROUGH THE OPEN SECTION OF FENCING, WHICH WILL PLACE YOU AT THE FRONT OF THE PET RELIEF AREA. THERE WILL BE AN OBSTACLE TO YOUR RIGHT AS YOU APPROACH THE PET RELIEF AREA

#### HIGH-RISE ELEVATOR (FLOORS 1 - 9 & 28 - 46) << TO >> PET RELIEF AREA

THE PET RELIEF AREA IS LOCATED ON THE NINTH FLOOR ROOF DECK. ACCESS TO THE ROOF DECK IS VIA THE FITNESS CENTER.

- EXIT THE ELEVATOR ON THE NINTH FLOOR AND PROCEED EAST 7 STEPS
- ↩ TURN LEFT AND PROCEED 4 STEPS, WHICH WILL PLACE YOU AT THE ENTRY TO THE FITNESS CENTER
- ◆ THE FITNESS CENTER ENTRY DOOR IS ACCESSIBLE WITH A VALID GUESTROOM KEY. THE DOOR IS NOT EQUIPPED WITH AN AUTOMATIC OPENING DEVICE
- PROCEED THROUGH THE FITNESS CENTER DOOR 40 STEPS, WHICH WILL PLACE YOU AT THE NORTH ENTRANCE TO THE ROOF DECK
- ◆ THE ROOF DECK ENTRY DOOR WILL REMAIN UNLOCKED DURING THE EVENT AND IS NOT EQUIPPED WITH AN AUTOMATIC OPENING DEVICE
- ↪ TURN RIGHT AND PROCEED THROUGH THE DOOR 11 STEPS
- ↩ TURN LEFT AND PROCEED 12 STEPS THROUGH THE OPEN SECTION OF FENCING, WHICH WILL PLACE YOU AT THE FRONT OF THE PET RELIEF AREA. THERE WILL BE AN OBSTACLE TO YOUR RIGHT AS YOU APPROACH THE PET RELIEF AREA

## CHICAGO MARRIOTT MAGNIFICENT MILE

PLEASE NOTE THAT DIRECTIONS GIVEN IN 'STEPS' ARE APPROXIMATE

### PET RELIEF AREA (NINTH FLOOR ROOF DECK) CONT...

#### LOW-RISE ELEVATOR (FLOORS 1 - 28) << TO >> PET RELIEF AREA

THE PET RELIEF AREA IS LOCATED ON THE NINTH FLOOR ROOF DECK. ACCESS TO THE ROOF DECK IS VIA THE FITNESS CENTER.

- EXIT THE ELEVATOR ON THE NINTH FLOOR AND PROCEED EAST 7 STEPS
- ↩ TURN LEFT AND PROCEED 15 STEPS, WHICH WILL PLACE YOU AT THE ENTRY TO THE FITNESS CENTER
- ◇ THE FITNESS CENTER ENTRY DOOR IS ACCESSIBLE WITH A VALID GUESTROOM KEY. THE DOOR IS NOT EQUIPPED WITH AN AUTOMATIC OPENING DEVICE
- PROCEED THROUGH THE FITNESS CENTER DOOR 40 STEPS, WHICH WILL PLACE YOU AT THE NORTH ENTRANCE TO THE ROOF DECK
- ◇ THE ROOF DECK ENTRY DOOR WILL REMAIN UNLOCKED DURING THE EVENT AND IS NOT EQUIPPED WITH AN AUTOMATIC OPENING DEVICE
- ↪ TURN RIGHT AND PROCEED THROUGH THE DOOR 11 STEPS
- ↩ TURN LEFT AND PROCEED 12 STEPS THROUGH THE OPEN SECTION OF FENCING, WHICH WILL PLACE YOU AT THE FRONT OF THE PET RELIEF AREA. THERE WILL BE AN OBSTACLE TO YOUR RIGHT AS YOU APPROACH THE PET RELIEF AREA

## CHICAGO MARRIOTT MAGNIFICENT MILE

PLEASE NOTE THAT DIRECTIONS GIVEN IN 'STEPS' ARE APPROXIMATE

### FIFTH FLOOR BALLROOM AREA

#### **HIGH-RISE ELEVATOR (FLOORS 1 - 9 & 28 - 46) << TO >> SALON A**

- EXIT THE ELEVATOR ON THE FIFTH FLOOR AND PROCEED EAST 7 STEPS
- ↩ TURN LEFT AND PROCEED 57 STEPS
- ↪ TURN RIGHT AND PROCEED 4 STEPS
- ↩ TURN LEFT AND PROCEED 5 STEPS
- ↪ TURN RIGHT AND PROCEED 9 STEPS
- ↩ TURN LEFT AND PROCEED 2 STEPS, WHICH WILL PLACE YOU AT THE ENTRANCE DOOR TO SALON A

#### **LOW-RISE ELEVATOR (FLOORS 1 - 28) << TO >> SALON A**

- EXIT THE ELEVATOR ON THE FIFTH FLOOR AND PROCEED EAST 7 STEPS
- ↩ TURN LEFT AND PROCEED 66 STEPS
- ↪ TURN RIGHT AND PROCEED 4 STEPS
- ↩ TURN LEFT AND PROCEED 5 STEPS
- ↪ TURN RIGHT AND PROCEED 9 STEPS
- ↩ TURN LEFT AND PROCEED 2 STEPS, WHICH WILL PLACE YOU AT THE ENTRANCE DOOR TO SALON A

#### **HIGH-RISE ELEVATOR (FLOORS 1 - 9 & 28 - 46) << TO >> SALON D**

- EXIT THE ELEVATOR ON THE FIFTH FLOOR AND PROCEED EAST 7 STEPS
- ↩ TURN LEFT AND PROCEED 36 STEPS
- ↪ TURN RIGHT AND PROCEED 8 STEPS, WHICH WILL PLACE YOU AT THE ENTRANCE DOOR TO SALON D

#### **LOW-RISE ELEVATOR (FLOORS 1 - 28) << TO >> SALON D**

- EXIT THE ELEVATOR ON THE FIFTH FLOOR AND PROCEED EAST 7 STEPS
- ↩ TURN LEFT AND PROCEED 45 STEPS
- ↪ TURN RIGHT AND PROCEED 8 STEPS, WHICH WILL PLACE YOU AT THE ENTRANCE DOOR TO SALON D

## CHICAGO MARRIOTT MAGNIFICENT MILE

PLEASE NOTE THAT DIRECTIONS GIVEN IN 'STEPS' ARE APPROXIMATE

### FIFTH FLOOR BALLROOM AREA CONT...

#### **HIGH-RISE ELEVATOR (FLOORS 1 - 9 & 28 - 46) << TO >> SALON E**

- EXIT THE ELEVATOR ON THE FIFTH FLOOR AND PROCEED EAST 7 STEPS
- ↶ TURN LEFT AND PROCEED 22 STEPS
- ↷ TURN RIGHT AND PROCEED 8 STEPS, WHICH WILL PLACE YOU AT THE ENTRANCE DOOR TO SALON E

#### **LOW-RISE ELEVATOR (FLOORS 1 - 28) << TO >> SALON E**

- EXIT THE ELEVATOR ON THE FIFTH FLOOR AND PROCEED EAST 7 STEPS
- ↶ TURN LEFT AND PROCEED 31 STEPS
- ↷ TURN RIGHT AND PROCEED 8 STEPS, WHICH WILL PLACE YOU AT THE ENTRANCE DOOR TO SALON E

#### **HIGH-RISE ELEVATOR (FLOORS 1 - 9 & 28 - 46) << TO >> SALON F**

- EXIT THE ELEVATOR ON THE FIFTH FLOOR AND PROCEED EAST 7 STEPS
- ↷ TURN RIGHT AND PROCEED 2 STEPS
- ↶ TURN LEFT AND PROCEED 14 STEPS
- ↶ TURN LEFT AND PROCEED 3 STEPS, WHICH WILL PLACE YOU AT THE ENTRANCE DOOR TO SALON F

#### **LOW-RISE ELEVATOR (FLOORS 1 - 28) << TO >> SALON F**

- EXIT THE ELEVATOR ON THE FIFTH FLOOR AND PROCEED EAST 7 STEPS
- ↶ TURN LEFT AND PROCEED 7 STEPS
- ↷ TURN RIGHT AND PROCEED 14 STEPS
- ↶ TURN LEFT AND PROCEED 3 STEPS, WHICH WILL PLACE YOU AT THE ENTRANCE DOOR TO SALON F

#### **MEETING ROOM ELEVATOR (FLOORS 1 - 7) << TO >> SALON A**

- EXIT THE ELEVATOR ON THE FIFTH FLOOR AND PROCEED SOUTH 3 STEPS
- ↶ TURN LEFT AND PROCEED 9 STEPS
- ↶ TURN LEFT AND PROCEED 6 STEPS
- ↷ TURN RIGHT AND PROCEED 4 STEPS
- ↶ TURN LEFT AND PROCEED 5 STEPS
- ↷ TURN RIGHT AND PROCEED 9 STEPS
- ↷ TURN RIGHT AND PROCEED 2 STEPS, WHICH WILL PLACE YOU AT THE ENTRANCE DOOR TO SALON A

## CHICAGO MARRIOTT MAGNIFICENT MILE

PLEASE NOTE THAT DIRECTIONS GIVEN IN 'STEPS' ARE APPROXIMATE

### FIFTH FLOOR BALLROOM AREA CONT...

#### **MEETING ROOM ELEVATOR (FLOORS 1 - 7) << TO >> SALON D**

- EXIT THE ELEVATOR ON THE FIFTH FLOOR AND PROCEED SOUTH 3 STEPS
- ↶ TURN LEFT AND PROCEED 9 STEPS
- ↷ TURN RIGHT AND PROCEED 15 STEPS
- ↶ TURN LEFT AND PROCEED 8 STEPS, WHICH WILL PLACE YOU AT THE ENTRANCE DOOR TO SALON D

#### **MEETING ROOM ELEVATOR (FLOORS 1 - 7) << TO >> SALON E**

- ↷ TURN RIGHT AND PROCEED SOUTH 3 STEPS
- ↶ TURN LEFT AND PROCEED 9 STEPS
- ↷ TURN RIGHT AND PROCEED 29 STEPS
- ↶ TURN LEFT AND PROCEED 8 STEPS, WHICH WILL PLACE YOU AT THE ENTRANCE DOOR TO SALON E

#### **MEETING ROOM ELEVATOR (FLOORS 1 - 7) << TO >> SALON F**

- EXIT THE ELEVATOR ON THE FIFTH FLOOR AND PROCEED SOUTH 3 STEPS
- ↶ TURN LEFT AND PROCEED 9 STEPS
- ↷ TURN RIGHT AND PROCEED 53 STEPS
- ↶ TURN LEFT AND PROCEED 14 STEPS
- ↶ TURN LEFT AND PROCEED 3 STEPS, WHICH WILL PLACE YOU AT THE ENTRANCE DOOR TO SALON F

#### **UP ESCALATOR << TO >> SALON A**

- EXIT THE ESCALATOR ON THE FIFTH FLOOR AND PROCEED FORWARD 3 STEPS
- ↷ TURN RIGHT AND PROCEED 6 STEPS
- ↶ TURN LEFT AND PROCEED 11 STEPS
- ↷ TURN RIGHT AND PROCEED 4 STEPS
- ↶ TURN LEFT AND PROCEED 5 STEPS
- ↷ TURN RIGHT AND PROCEED 9 STEPS
- ↶ TURN LEFT AND PROCEED 2 STEPS, WHICH WILL PLACE YOU AT THE ENTRANCE DOOR TO SALON A

## CHICAGO MARRIOTT MAGNIFICENT MILE

PLEASE NOTE THAT DIRECTIONS GIVEN IN 'STEPS' ARE APPROXIMATE

### FIFTH FLOOR BALLROOM AREA CONT...

#### **SALON A << TO >> DOWN ESCALATOR**

- EXIT SALON A AND PROCEED 2 STEPS
- ↶ TURN LEFT AND PROCEED 9 STEPS
- ↶ TURN LEFT AND PROCEED 50 STEPS
- ↷ TURN RIGHT AND PROCEED 6 STEPS
- ↷ TURN RIGHT AND PROCEED 3, WHICH WILL PLACE YOU AT THE ENTRANCE TO THE DOWN ESCALATOR

#### **UP ESCALATOR << TO >> SALON D - FIFTH FLOOR BALLROOM**

- EXIT THE ESCALATOR ON THE FIFTH FLOOR AND PROCEED FORWARD 3 STEPS
- ↷ TURN RIGHT AND PROCEED 6 STEPS
- ↶ TURN RIGHT AND PROCEED 10 STEPS
- ↶ TURN LEFT AND PROCEED 8 STEPS, WHICH WILL PLACE YOU AT THE ENTRANCE DOOR TO SALON D

#### **SALON D << TO >> TO DOWN ESCALATOR**

- EXIT SALON D AND PROCEED 8 STEPS
- ↶ TURN LEFT AND PROCEED 24 STEPS
- ↷ TURN RIGHT AND PROCEED 6 STEPS
- ↷ TURN RIGHT AND PROCEED 3, WHICH WILL PLACE YOU AT THE ENTRANCE TO THE DOWN ESCALATOR

#### **UP ESCALATOR << TO >> SALON E**

- EXIT THE ESCALATOR ON THE FIFTH FLOOR AND PROCEED FORWARD 3 STEPS
- ↷ TURN RIGHT AND PROCEED 6 STEPS
- ↶ TURN RIGHT AND PROCEED 24 STEPS
- ↶ TURN LEFT AND PROCEED 8 STEPS, WHICH WILL PLACE YOU AT THE ENTRANCE DOOR TO SALON E

#### **SALON E << TO >> DOWN ESCALATOR**

- EXIT SALON E AND PROCEED 8 STEPS
- ↶ TURN LEFT AND PROCEED 10 STEPS
- ↷ TURN RIGHT AND PROCEED 6 STEPS
- ↷ TURN RIGHT AND PROCEED 3, WHICH WILL PLACE YOU AT THE ENTRANCE TO THE DOWN ESCALATOR



## **CHICAGO MARRIOTT MAGNIFICENT MILE**

PLEASE NOTE THAT DIRECTIONS GIVEN IN 'STEPS' ARE APPROXIMATE

### **FIFTH FLOOR BALLROOM AREA CONT...**

#### **UP ESCALATOR << TO >> SALON F**

- EXIT THE ESCALATOR ON THE FIFTH FLOOR AND PROCEED FORWARD 3 STEPS
- ↗ TURN RIGHT AND PROCEED 6 STEPS
- ↖ TURN RIGHT AND PROCEED 48 STEPS
- ↖ TURN LEFT AND PROCEED 14 STEPS
- ↖ TURN LEFT AND PROCEED 3 STEPS, WHICH WILL PLACE YOU AT THE ENTRANCE DOOR TO SALON F

#### **SALON F << TO >> DOWN ESCALATOR**

- EXIT SALON F AND PROCEED 3 STEPS
- ↗ TURN RIGHT AND PROCEED 14 STEPS
- ↗ TURN RIGHT AND PROCEED 14 STEPS
- ↖ TURN LEFT AND PROCEED 6 STEPS
- ↗ TURN RIGHT AND PROCEED 3, WHICH WILL PLACE YOU AT THE ENTRANCE TO THE DOWN ESCALATOR

## CHICAGO MARRIOTT MAGNIFICENT MILE

PLEASE NOTE THAT DIRECTIONS GIVEN IN 'STEPS' ARE APPROXIMATE

### FIFTH FLOOR REGISTRATION DESK

#### **HIGH-RISE ELEVATOR (FLOORS 1 - 9 & 28 - 46) << TO >> SOUTH REGISTRATION DESK**

- EXIT THE ELEVATOR ON THE FIFTH FLOOR AND PROCEED WEST 7 STEPS
- ↪ TURN RIGHT AND PROCEED 9 STEPS
- ↪ TURN RIGHT AND PROCEED 3 STEPS
- ↩ TURN LEFT AND PROCEED 7 STEPS
- ↩ TURN LEFT AND PROCEED 2 STEPS, WHICH WILL PLACE YOU AT THE SOUTH REGISTRATION DESK

#### **LOW-RISE ELEVATOR (FLOORS 1 - 28) << TO >> SOUTH REGISTRATION DESK**

- EXIT THE ELEVATOR ON THE FIFTH FLOOR AND PROCEED WEST 7 STEPS
- ↪ TURN RIGHT AND PROCEED 18 STEPS
- ↪ TURN RIGHT AND PROCEED 3 STEPS
- ↩ TURN LEFT AND PROCEED 7 STEPS
- ↩ TURN LEFT AND PROCEED 2 STEPS, WHICH WILL PLACE YOU AT THE SOUTH REGISTRATION DESK

#### **HIGH-RISE ELEVATOR (FLOORS 1 - 9 & 28 - 46) << TO >> CENTER REGISTRATION DESK**

- EXIT THE ELEVATOR ON THE FIFTH FLOOR AND PROCEED WEST 7 STEPS
- ↪ TURN RIGHT AND PROCEED 9 STEPS
- ↪ TURN RIGHT AND PROCEED 3 STEPS
- ↩ TURN LEFT AND PROCEED 17 STEPS
- ↩ TURN LEFT AND PROCEED 2 STEPS, WHICH WILL PLACE YOU AT THE CENTER REGISTRATION DESK

#### **LOW-RISE ELEVATOR (FLOORS 1 - 28) << TO >> CENTER REGISTRATION DESK**

- EXIT THE ELEVATOR ON THE FIFTH FLOOR AND PROCEED WEST 7 STEPS
- ↪ TURN RIGHT AND PROCEED 18 STEPS
- ↪ TURN RIGHT AND PROCEED 3 STEPS
- ↩ TURN LEFT AND PROCEED 17 STEPS
- ↩ TURN LEFT AND PROCEED 2 STEPS, WHICH WILL PLACE YOU AT THE CENTER REGISTRATION DESK

## CHICAGO MARRIOTT MAGNIFICENT MILE

PLEASE NOTE THAT DIRECTIONS GIVEN IN 'STEPS' ARE APPROXIMATE

### FIFTH FLOOR REGISTRATION DESK CONT...

#### **HIGH-RISE ELEVATOR (FLOORS 1 - 9 & 28 - 46) << TO >> NORTH REGISTRATION DESK**

- EXIT THE ELEVATOR ON THE FIFTH FLOOR AND PROCEED WEST 7 STEPS
- ↪ TURN RIGHT AND PROCEED 9 STEPS
- ↪ TURN RIGHT AND PROCEED 3 STEPS
- ↩ TURN LEFT AND PROCEED 27 STEPS
- ↩ TURN LEFT AND PROCEED 2 STEPS, WHICH WILL PLACE YOU AT THE NORTH REGISTRATION DESK

#### **LOW-RISE ELEVATOR (FLOORS 1 - 28) << TO >> NORTH REGISTRATION DESK**

- EXIT THE ELEVATOR ON THE FIFTH FLOOR AND PROCEED WEST 7 STEPS
- ↪ TURN RIGHT AND PROCEED 18 STEPS
- ↪ TURN RIGHT AND PROCEED 3 STEPS
- ↩ TURN LEFT AND PROCEED 27 STEPS
- ↩ TURN LEFT AND PROCEED 2 STEPS, WHICH WILL PLACE YOU AT THE NORTH REGISTRATION DESK

#### **MEETING ROOM ELEVATOR (FLOORS 1 - 7) << TO >> NORTH REGISTRATION DESK**

- EXIT THE ELEVATOR ON THE FIFTH FLOOR AND PROCEED WEST 3 STEPS
- ↪ TURN RIGHT AND PROCEED 6 STEPS
- ↩ TURN LEFT AND PROCEED 8 STEPS
- ↪ TURN RIGHT AND PROCEED 2, WHICH WILL PLACE YOU AT THE NORTH REGISTRATION DESK

#### **MEETING ROOM ELEVATOR (FLOORS 1 - 7) << TO >> CENTER REGISTRATION DESK**

- EXIT THE ELEVATOR ON THE FIFTH FLOOR AND PROCEED WEST 3 STEPS
- ↪ TURN RIGHT AND PROCEED 6 STEPS
- ↩ TURN LEFT AND PROCEED 18 STEPS
- ↪ TURN RIGHT AND PROCEED 2, WHICH WILL PLACE YOU AT THE CENTER REGISTRATION DESK

#### **MEETING ROOM ELEVATOR (FLOORS 1 - 7) << TO >> SOUTH REGISTRATION DESK**

- EXIT THE ELEVATOR ON THE FIFTH FLOOR AND PROCEED WEST 3 STEPS
- ↪ TURN RIGHT AND PROCEED 6 STEPS
- ↩ TURN LEFT AND PROCEED 28 STEPS
- ↪ TURN RIGHT AND PROCEED 2, WHICH WILL PLACE YOU AT THE SOUTH REGISTRATION DESK

## CHICAGO MARRIOTT MAGNIFICENT MILE

PLEASE NOTE THAT DIRECTIONS GIVEN IN 'STEPS' ARE APPROXIMATE

### FIFTH FLOOR MEN'S AND WOMEN'S RESTROOMS

#### **SALON A << TO >> MEN'S RESTROOM**

- EXIT SALON A AND PROCEED 2 STEPS
- ↩ TURN LEFT AND PROCEED 9 STEPS
- ↩ TURN LEFT AND PROCEED 11 STEPS
- ↪ TURN RIGHT AND PROCEED 19 STEPS
- ↩ TURN LEFT AND PROCEED 36 STEPS
- ↪ TURN RIGHT AND PROCEED 4, WHICH WILL PLACE YOU AT THE ENTRANCE TO THE MEN'S RESTROOM

#### **SALON A << TO >> WOMEN'S RESTROOM**

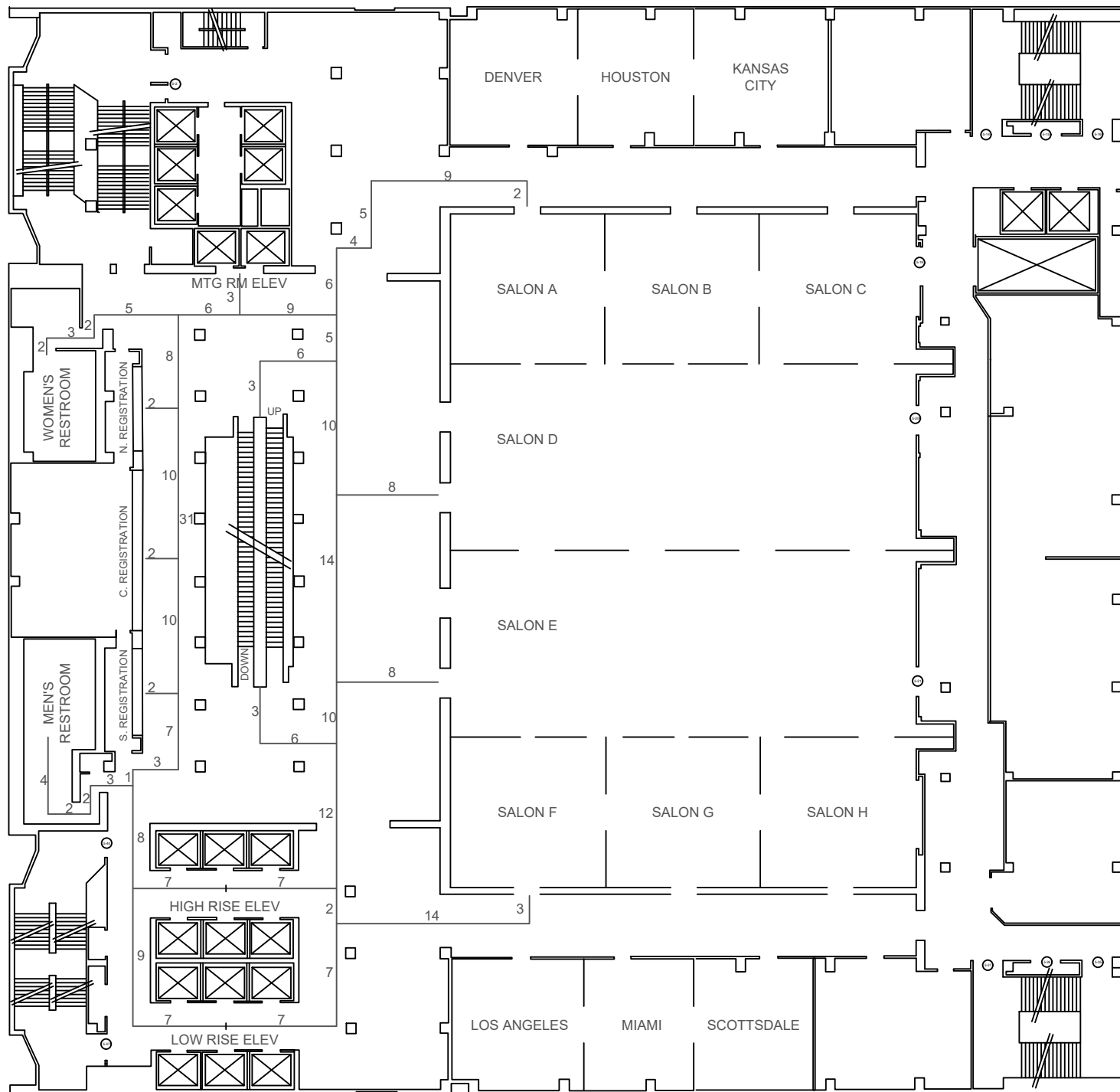
- EXIT SALON A AND PROCEED 2 STEPS
- ↩ TURN LEFT AND PROCEED 9 STEPS
- ↩ TURN LEFT AND PROCEED 11 STEPS
- ↪ TURN RIGHT AND PROCEED 24 STEPS
- ↩ TURN LEFT AND PROCEED 2, WHICH WILL PLACE YOU AT THE ENTRANCE TO THE WOMEN'S RESTROOM

#### **SALON D << TO >> MEN'S RESTROOM**

- EXIT SALON D AND PROCEED 8 STEPS
- ↩ TURN LEFT AND PROCEED 24 STEPS
- ↪ TURN RIGHT AND PROCEED 15 STEPS
- ↩ TURN LEFT AND PROCEED 3 STEPS
- ↪ TURN RIGHT AND PROCEED 4, WHICH WILL PLACE YOU AT THE ENTRANCE TO THE MEN'S RESTROOM

#### **SALON D << TO >> WOMEN'S RESTROOM**

- EXIT SALON D AND PROCEED 8 STEPS
- ↪ TURN RIGHT AND PROCEED 15 STEPS
- ↩ TURN LEFT AND PROCEED 20 STEPS
- ↩ TURN LEFT AND PROCEED 2, WHICH WILL PLACE YOU AT THE ENTRANCE TO THE WOMEN'S RESTROOM



## CHICAGO MARRIOTT MAGNIFICENT MILE

PLEASE NOTE THAT DIRECTIONS GIVEN IN 'STEPS' ARE APPROXIMATE

### FIFTH FLOOR MEN'S AND WOMEN'S RESTROOMS CONT...

#### **SALON E << TO >> MEN'S RESTROOM**

- EXIT SALON E AND PROCEED 8 STEPS
- ↩ TURN LEFT AND PROCEED 10 STEPS
- ↪ TURN RIGHT AND PROCEED 15 STEPS
- ↩ TURN LEFT AND PROCEED 3 STEPS
- ↪ TURN RIGHT AND PROCEED 4, WHICH WILL PLACE YOU AT THE ENTRANCE TO THE MEN'S RESTROOM

#### **SALON E << TO >> WOMEN'S RESTROOM**

- EXIT SALON E AND PROCEED 8 STEPS
- ↪ TURN RIGHT AND PROCEED 29 STEPS
- ↩ TURN LEFT AND PROCEED 20 STEPS
- ↩ TURN LEFT AND PROCEED 2, WHICH WILL PLACE YOU AT THE ENTRANCE TO THE WOMEN'S RESTROOM

#### **SALON F << TO >> MEN'S RESTROOM**

- EXIT SALON F AND PROCEED 3 STEPS
- ↪ TURN RIGHT AND PROCEED 14 STEPS
- ↪ TURN RIGHT AND PROCEED 2 STEPS
- ↩ TURN LEFT AND PROCEED 14 STEPS
- ↪ TURN RIGHT AND PROCEED 8 STEPS
- ↩ TURN LEFT AND PROCEED 3 STEPS, WHICH WILL PLACE YOU AT THE ENTRANCE TO THE MEN'S RESTROOM

#### **SALON F << TO >> WOMEN'S RESTROOM**

- EXIT SALON F AND PROCEED 3 STEPS
- ↪ TURN RIGHT AND PROCEED 14 STEPS
- ↪ TURN RIGHT AND PROCEED 53 STEPS
- ↩ TURN LEFT AND PROCEED 20 STEPS
- ↩ TURN LEFT AND PROCEED 2, WHICH WILL PLACE YOU AT THE ENTRANCE TO THE WOMEN'S RESTROOM

## CHICAGO MARRIOTT MAGNIFICENT MILE

PLEASE NOTE THAT DIRECTIONS GIVEN IN 'STEPS' ARE APPROXIMATE

### SEVENTH FLOOR BALLROOM AREA

#### **HIGH-RISE ELEVATOR (FLOORS 1 - 9 & 28 - 46) << TO >> SALON I**

- EXIT THE ELEVATOR ON THE SEVENTH FLOOR AND PROCEED EAST 7 STEPS
- ↩ TURN LEFT AND PROCEED 49 STEPS
- ↪ TURN RIGHT AND PROCEED 8 STEPS, WHICH WILL PLACE YOU AT THE ENTRANCE DOOR TO SALON I

#### **LOW-RISE ELEVATOR (FLOORS 1 - 28) << TO >> SALON I**

- EXIT THE ELEVATOR ON THE SEVENTH FLOOR AND PROCEED EAST 7 STEPS
- ↩ TURN LEFT AND PROCEED 60 STEPS
- ↪ TURN RIGHT AND PROCEED 8 STEPS, WHICH WILL PLACE YOU AT THE ENTRANCE DOOR TO SALON I

#### **HIGH-RISE ELEVATOR (FLOORS 1 - 9 & 28 - 46) << TO >> SALON II**

- EXIT THE ELEVATOR ON THE SEVENTH FLOOR AND PROCEED EAST 7 STEPS
- ↩ TURN LEFT AND PROCEED 24 STEPS
- ↪ TURN RIGHT AND PROCEED 8 STEPS, WHICH WILL PLACE YOU AT THE ENTRANCE DOOR TO SALON II

#### **LOW-RISE ELEVATOR (FLOORS 1 - 28) << TO >> SALON II**

- EXIT THE ELEVATOR ON THE SEVENTH FLOOR AND PROCEED EAST 7 STEPS
- ↩ TURN LEFT AND PROCEED 35 STEPS
- ↪ TURN RIGHT AND PROCEED 8 STEPS, WHICH WILL PLACE YOU AT THE ENTRANCE DOOR TO SALON II

#### **HIGH-RISE ELEVATOR (FLOORS 1 - 9 & 28 - 46) << TO >> SALON III**

- EXIT THE ELEVATOR ON THE SEVENTH FLOOR AND PROCEED EAST 7 STEPS
- ↪ TURN RIGHT AND PROCEED 9 STEPS
- ↩ TURN LEFT AND PROCEED 8 STEPS, WHICH WILL PLACE YOU AT THE ENTRANCE DOOR TO SALON III

#### **LOW-RISE ELEVATOR (FLOORS 1 - 28) << TO >> SALON III**

- EXIT THE ELEVATOR ON THE SEVENTH FLOOR AND PROCEED EAST 7 STEPS
- ↩ TURN LEFT AND PROCEED 2 STEPS
- ↪ TURN RIGHT AND PROCEED 8 STEPS, WHICH WILL PLACE YOU AT THE ENTRANCE DOOR TO SALON III

#### **MEETING ROOM ELEVATOR (FLOORS 1 - 7) << TO >> SALON I**

- EXIT THE ELEVATOR ON THE SEVENTH FLOOR AND PROCEED SOUTH 3 STEPS
- ↩ TURN LEFT AND PROCEED 9 STEPS
- ↩ TURN LEFT AND PROCEED 5 STEPS

## **CHICAGO MARRIOTT MAGNIFICENT MILE**

PLEASE NOTE THAT DIRECTIONS GIVEN IN 'STEPS' ARE APPROXIMATE

➡ TURN RIGHT AND PROCEED 8 STEPS, WHICH WILL PLACE YOU AT THE ENTRANCE DOOR TO SALON I

### **SEVENTH FLOOR BALLROOM AREA CONT...**

#### **MEETING ROOM ELEVATOR (FLOORS 1 - 7) << TO >> SALON II**

- ➡ EXIT THE ELEVATOR ON THE SEVENTH FLOOR AND PROCEED SOUTH 3 STEPS
- ↩ TURN LEFT AND PROCEED 9 STEPS
- ➡ TURN RIGHT AND PROCEED 20 STEPS
- ↩ TURN LEFT AND PROCEED 8 STEPS, WHICH WILL PLACE YOU AT THE ENTRANCE DOOR TO SALON II

#### **MEETING ROOM ELEVATOR (FLOORS 1 - 7) << TO >> SALON III**

- ➡ EXIT THE ELEVATOR ON THE SEVENTH FLOOR AND PROCEED SOUTH 3 STEPS
- ↩ TURN LEFT AND PROCEED 9 STEPS
- ➡ TURN RIGHT AND PROCEED 53 STEPS
- ↩ TURN LEFT AND PROCEED 8 STEPS, WHICH WILL PLACE YOU AT THE ENTRANCE DOOR TO SALON III

#### **UP ESCALATOR << TO >> SALON I**

- ➡ EXIT THE ESCALATOR ON THE SEVENTH FLOOR AND PROCEED FORWARD 3 STEPS
- ➡ TURN RIGHT AND PROCEED 6 STEPS
- ↩ TURN LEFT AND PROCEED 10 STEPS
- ↩ TURN LEFT AND PROCEED 8 STEPS, WHICH WILL PLACE YOU AT THE ENTRANCE DOOR TO SALON I

#### **SALON I - SEVENTH FLOOR BALLROOM << TO >> DOWN ESCALATOR**

- ➡ EXIT SALON I AND PROCEED 8 STEPS
- ↩ TURN LEFT AND PROCEED 10 STEPS
- ↩ TURN LEFT AND PROCEED 38 STEPS
- ➡ TURN RIGHT AND PROCEED 6 STEPS
- ➡ TURN RIGHT AND PROCEED 3, WHICH WILL PLACE YOU AT THE ENTRANCE TO THE DOWN ESCALATOR

#### **UP ESCALATOR << TO >> SALON II - SEVENTH FLOOR BALLROOM**

- ➡ EXIT THE ESCALATOR ON THE SEVENTH FLOOR AND PROCEED FORWARD 3 STEPS
- ➡ TURN RIGHT AND PROCEED 6 STEPS
- ↩ TURN RIGHT AND PROCEED 15 STEPS
- ↩ TURN LEFT AND PROCEED 8 STEPS, WHICH WILL PLACE YOU AT THE ENTRANCE DOOR TO SALON II



## **CHICAGO MARRIOTT MAGNIFICENT MILE**

PLEASE NOTE THAT DIRECTIONS GIVEN IN 'STEPS' ARE APPROXIMATE

### **SEVENTH FLOOR BALLROOM AREA CONT...**

#### **SALON II - SEVENTH FLOOR BALLROOM << TO >> DOWN ESCALATOR**

- EXIT SALON II AND PROCEED 8 STEPS
- ↶ TURN LEFT AND PROCEED 13 STEPS
- ↷ TURN RIGHT AND PROCEED 6 STEPS
- ↷ TURN RIGHT AND PROCEED 3, WHICH WILL PLACE YOU AT THE ENTRANCE TO THE DOWN ESCALATOR

#### **UP ESCALATOR << TO >> SALON III - SEVENTH FLOOR BALLROOM**

- EXIT THE ESCALATOR ON THE SEVENTH FLOOR AND PROCEED FORWARD 3 STEPS
- ↷ TURN RIGHT AND PROCEED 6 STEPS
- ↶ TURN RIGHT AND PROCEED 48 STEPS
- ↶ TURN LEFT AND PROCEED 8 STEPS, WHICH WILL PLACE YOU AT THE ENTRANCE DOOR TO SALON III

#### **SALON III << TO >> DOWN ESCALATOR**

- EXIT SALON III AND PROCEED 8 STEPS
- ↷ TURN RIGHT AND PROCEED 20 STEPS
- ↶ TURN LEFT AND PROCEED 6 STEPS
- ↷ TURN RIGHT AND PROCEED 3, WHICH WILL PLACE YOU AT THE ENTRANCE TO THE DOWN ESCALATOR

## CHICAGO MARRIOTT MAGNIFICENT MILE

PLEASE NOTE THAT DIRECTIONS GIVEN IN 'STEPS' ARE APPROXIMATE

### SEVENTH FLOOR REGISTRATION DESK

#### **HIGH-RISE ELEVATOR (FLOORS 1 - 9 & 28 - 46) << TO >> SOUTH REGISTRATION DESK**

- EXIT THE ELEVATOR ON THE SEVENTH FLOOR AND PROCEED WEST 7 STEPS
- ↪ TURN RIGHT AND PROCEED 8 STEPS
- ↪ TURN RIGHT AND PROCEED 3 STEPS
- ↩ TURN LEFT AND PROCEED 7 STEPS
- ↩ TURN LEFT AND PROCEED 2 STEPS, WHICH WILL PLACE YOU AT THE SOUTH REGISTRATION DESK

#### **LOW-RISE ELEVATOR (FLOORS 1 - 28) << TO >> SOUTH REGISTRATION DESK**

- EXIT THE ELEVATOR ON THE SEVENTH FLOOR AND PROCEED WEST 7 STEPS
- ↪ TURN RIGHT AND PROCEED 17 STEPS
- ↪ TURN RIGHT AND PROCEED 3 STEPS
- ↩ TURN LEFT AND PROCEED 7 STEPS
- ↩ TURN LEFT AND PROCEED 2 STEPS, WHICH WILL PLACE YOU AT THE SOUTH REGISTRATION DESK

#### **HIGH-RISE ELEVATOR (FLOORS 1 - 9 & 28 - 46) << TO >> CENTER REGISTRATION DESK**

- EXIT THE ELEVATOR ON THE SEVENTH FLOOR AND PROCEED WEST 7 STEPS
- ↪ TURN RIGHT AND PROCEED 8 STEPS
- ↪ TURN RIGHT AND PROCEED 3 STEPS
- ↩ TURN LEFT AND PROCEED 17 STEPS
- ↩ TURN LEFT AND PROCEED 2 STEPS, WHICH WILL PLACE YOU AT THE CENTER REGISTRATION DESK

#### **LOW-RISE ELEVATOR (FLOORS 1 - 28) << TO >> CENTER REGISTRATION DESK**

- EXIT THE ELEVATOR ON THE SEVENTH FLOOR AND PROCEED WEST 7 STEPS
- ↪ TURN RIGHT AND PROCEED 17 STEPS
- ↪ TURN RIGHT AND PROCEED 3 STEPS
- ↩ TURN LEFT AND PROCEED 17 STEPS
- ↩ TURN LEFT AND PROCEED 2 STEPS, WHICH WILL PLACE YOU AT THE CENTER REGISTRATION DESK

## CHICAGO MARRIOTT MAGNIFICENT MILE

PLEASE NOTE THAT DIRECTIONS GIVEN IN 'STEPS' ARE APPROXIMATE

### SEVENTH FLOOR REGISTRATION DESK CONT...

#### **HIGH-RISE ELEVATOR (FLOORS 1 - 9 & 28 - 46) << TO >> NORTH REGISTRATION DESK**

- EXIT THE ELEVATOR ON THE SEVENTH FLOOR AND PROCEED WEST 7 STEPS
- ↪ TURN RIGHT AND PROCEED 8 STEPS
- ↪ TURN RIGHT AND PROCEED 3 STEPS
- ↩ TURN LEFT AND PROCEED 27 STEPS
- ↩ TURN LEFT AND PROCEED 2 STEPS, WHICH WILL PLACE YOU AT THE NORTH REGISTRATION DESK

#### **LOW-RISE ELEVATOR (FLOORS 1 - 28) << TO >> NORTH REGISTRATION DESK**

- EXIT THE ELEVATOR ON THE SEVENTH FLOOR AND PROCEED WEST 7 STEPS
- ↪ TURN RIGHT AND PROCEED 17 STEPS
- ↪ TURN RIGHT AND PROCEED 3 STEPS
- ↩ TURN LEFT AND PROCEED 27 STEPS
- ↩ TURN LEFT AND PROCEED 2 STEPS, WHICH WILL PLACE YOU AT THE NORTH REGISTRATION DESK

#### **MEETING ROOM ELEVATOR (FLOORS 1 - 7) << TO >> NORTH REGISTRATION DESK**

- EXIT THE ELEVATOR ON THE SEVENTH FLOOR AND PROCEED WEST 3 STEPS
- ↪ TURN RIGHT AND PROCEED 6 STEPS
- ↩ TURN LEFT AND PROCEED 8 STEPS
- ↪ TURN RIGHT AND PROCEED 2, WHICH WILL PLACE YOU AT THE NORTH REGISTRATION DESK

#### **MEETING ROOM ELEVATOR (FLOORS 1 - 7) << TO >> CENTER REGISTRATION DESK**

- EXIT THE ELEVATOR ON THE SEVENTH FLOOR AND PROCEED WEST 3 STEPS
- ↪ TURN RIGHT AND PROCEED 6 STEPS
- ↩ TURN LEFT AND PROCEED 18 STEPS
- ↪ TURN RIGHT AND PROCEED 2, WHICH WILL PLACE YOU AT THE CENTER REGISTRATION DESK

#### **MEETING ROOM ELEVATOR (FLOORS 1 - 7) << TO >> SOUTH REGISTRATION DESK**

- EXIT THE ELEVATOR ON THE SEVENTH FLOOR AND PROCEED WEST 3 STEPS
- ↪ TURN RIGHT AND PROCEED 6 STEPS
- ↩ TURN LEFT AND PROCEED 28 STEPS
- ↪ TURN RIGHT AND PROCEED 2, WHICH WILL PLACE YOU AT THE SOUTH REGISTRATION DESK

## CHICAGO MARRIOTT MAGNIFICENT MILE

PLEASE NOTE THAT DIRECTIONS GIVEN IN 'STEPS' ARE APPROXIMATE

### SEVENTH FLOOR MEN'S AND WOMEN'S RESTROOMS

#### **SALON I << TO >> MEN'S RESTROOM**

- EXIT SALON I AND PROCEED 8 STEPS
- ↩ TURN LEFT AND PROCEED 41 STEPS
- ↪ TURN RIGHT AND PROCEED 20, WHICH WILL PLACE YOU AT THE ENTRANCE TO THE MEN'S RESTROOM

#### **SALON I << TO >> WOMEN'S RESTROOM**

- EXIT SALON I AND PROCEED 8 STEPS
- ↩ TURN LEFT AND PROCEED 5 STEPS
- ↪ TURN RIGHT AND PROCEED 20
- ↩ TURN LEFT AND PROCEED 2, WHICH WILL PLACE YOU AT THE ENTRANCE TO THE WOMEN'S RESTROOM

#### **SALON II << TO >> MEN'S RESTROOM**

- EXIT SALON II AND PROCEED 8 STEPS
- ↩ TURN LEFT AND PROCEED 16 STEPS
- ↪ TURN RIGHT AND PROCEED 20, WHICH WILL PLACE YOU AT THE ENTRANCE TO THE MEN'S RESTROOM

#### **SALON II << TO >> WOMEN'S RESTROOM**

- EXIT SALON II AND PROCEED 8 STEPS
- ↪ TURN RIGHT AND PROCEED 20 STEPS
- ↩ TURN LEFT AND PROCEED 20
- ↩ TURN LEFT AND PROCEED 2, WHICH WILL PLACE YOU AT THE ENTRANCE TO THE WOMEN'S RESTROOM

#### **SALON III << TO >> MEN'S RESTROOM**

- EXIT SALON III AND PROCEED 8 STEPS
- ↪ TURN RIGHT AND PROCEED 17 STEPS
- ↩ TURN LEFT AND PROCEED 20, WHICH WILL PLACE YOU AT THE ENTRANCE TO THE MEN'S RESTROOM

#### **SALON III << TO >> WOMEN'S RESTROOM**

- EXIT SALON III AND PROCEED 8 STEPS
- ↪ TURN RIGHT AND PROCEED 53 STEPS
- ↩ TURN LEFT AND PROCEED 20 STEPS
- ↩ TURN LEFT AND PROCEED 2, WHICH WILL PLACE YOU AT THE ENTRANCE TO THE WOMEN'S RESTROOM

